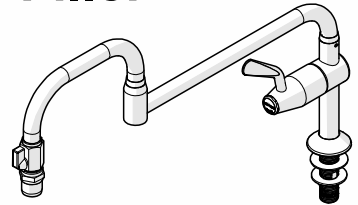


## Ezy-Wash® Hob Mounted Pot and Kettle Filler

### PRODUCT CODES:

- TF70HCF
- TF70HCFU



### SPECIFICATIONS

- Lever action handles
- All units are finished in bright chrome plate.
- Due to typical applications of this product, it has been designed as 0 star rated to allow fast pot filling.
- The identification buttons on the handles are standard and signify hot or cold water only. If water other than hot or cold is used (e.g. pre-mixed) then appropriate identification buttons will need to be purchased to replace those supplied on the standard unit.

**IMPORTANT:** All Ezy-Wash® Food Service taps are tested in accordance with AS/NZS 3718 and leave our premises in good working order.

### TECHNICAL DATA

Inlet	1/2" BSP - Male	
Outlet	Aerator	
Headwork	Ceramic Disc	
Working Pressure Range (kPa)	Min	50
	Max	500
Working Temperature Range (°C)	Min	5
	Max	90
Nominal Flow Rate (LPM)	15	
Construction	Brass	
Finish	Chrome	

**NOTE:** Galvin Engineering continually strive to improve their products. Specifications may change without notice.

### TOOLS REQUIRED

- Power drill
- Spanner or adjustable crescent
- Thread tape

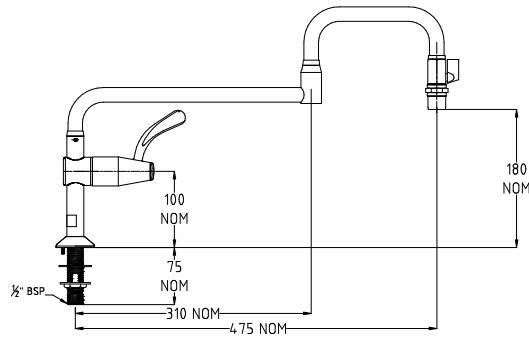
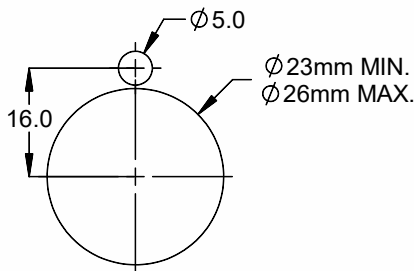
# Product Installation Guideline

## PRE-INSTALLATION

### MOUNTING DETAILS – HOLE CENTRES

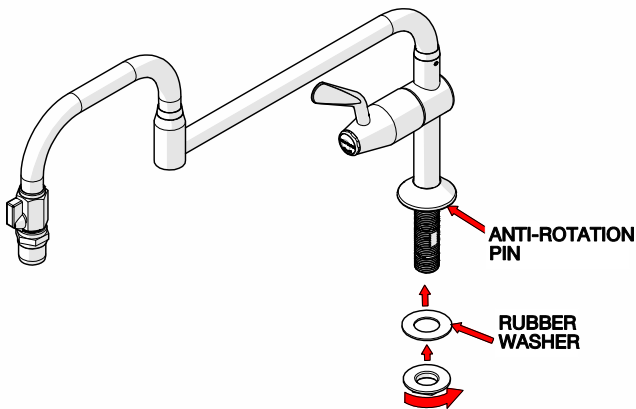
- If the mounting holes do not already exist, mark out and drill the holes in the bench/trough, as shown in rough-in dimensions.
- Ensure alignment of 5mm hole is as shown, as this will determine direction of water flow.

**Note: Before installation, all lines must be flushed. We recommend that a line strainer be installed prior to food service taps to eliminate any foreign material.**



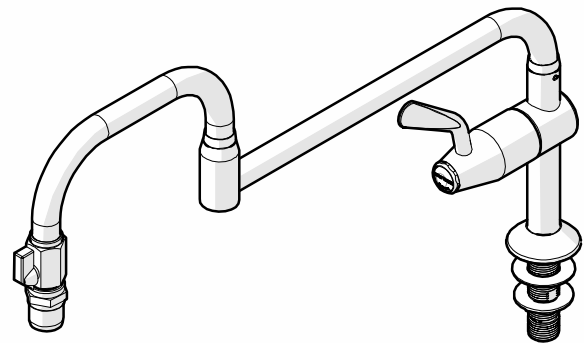
## INSTALLATION

**IMPORTANT:** Galvin Engineering products must be installed in accordance with these installation instructions and in accordance with AS/NZS 3500, the PCA and your local regulatory requirements. Water and/or electrical supply conditions must also comply to the applicable national and/or state standards. Failing to comply with these provisions shall void the product warranty and may affect the performance of the product.



### 1. Fit tap assembly

- Fit the tap into the bench.
- Ensure the sealing rubber washer is placed underneath the tap body and the anti-rotation pin locates properly.
- Secure underneath with the supplied back nut.



### 2. Connect & Testing

- Connect mains water supply ensuring thread tape is used.
- Once the drinking tap has been installed, turn on the water supply and test the unit for leaks.

## OPERATING INSTRUCTIONS

- The unit must be turned OFF at the base (not at the ball valve) whilst the unit is not in use, to ensure the unit is not under mains pressure when unsupervised. Flood damage may occur if a failure occurs whilst the unit is under mains pressure (warranty is void in this instance).
- Galvin Engineering recommends that the unit is periodically serviced by a qualified plumber and the swivel joints are regularly inspected to ensure grub screws remain secure.

## TROUBLESHOOTING

PROBLEM	CAUSE	RECTIFICATION
Inconsistent flow	Blocked top assembly	Remove top assembly and clean
Water is not flowing from the tap	Water is turned off	Turn on the water
Continuous flow	Top assembly loose or internally obstructed or damaged	Remove top assembly, clean with water and replace ceramic disc if required
Handle is loose	Screw has come loose	Tighten handle screw

## SERVICE AND MAINTENANCE

### CERAMIC CARTRIDGE TAPWARE

1. Turn off the water supply and turn on the tap handle to drain water from the bodies.
2. Remove the temperature indicator from the handle.
3. Remove the handle from the tap.
4. Unscrew the ceramic head part from the body.
5. Check the o-ring on the ceramic head part for wear and damage. Replace if required.
6. Clean the head part and the body of any debris.
7. Replace the cartridge and hand tighten back into the body.
8. Follow the product installation guidelines for the relevant product re-assembly method.

### WARRANTY

The warranty set forth herein is given expressly and is the only warranty given by the Galvin Engineering Pty Ltd. With respect to the product, Galvin Engineering Pty Ltd makes no other warranties, express or implied. Galvin Engineering Pty. Ltd. hereby specifically disclaims all other warranties, express or implied, including but not limited to the implied warranties of merchantability and fitness for a particular purpose.

Galvin Engineering Pty Ltd products are covered under our manufacturer's warranty available for download from [www.galvinengineering.com.au](http://www.galvinengineering.com.au) Galvin Engineering Pty Ltd expressly warrants that the product is free from operational defects in workmanship and materials for the warranty period as shown on the schedule in the manufacturer's warranty. During the warranty period, Galvin Engineering will replace or repair any defective products manufactured by Galvin Engineering without charge, so long as the terms of the Manufacturer's warranty are complied with.

The remedy described in the first paragraph of this warranty shall constitute the sole and exclusive remedy for breach of warranty, and Galvin Engineering Pty Ltd shall not be responsible for any incidental, special or consequential damages, including without limitation, lost profits or the cost of repairing or replacing other property which is damaged if this product does not work properly, other costs resulting from labour charges, delays, vandalism, negligence, fouling caused by foreign material, damage from adverse water conditions, chemical, electrical or any other circumstances over which Galvin Engineering has no control. This warranty shall be invalidated by any abuse, misuse, misapplication, improper installation or improper maintenance or alteration of the product.

Within Australia: 1300 514 074 Outside Australia: P: +61 (0)8 9338 2344

F: +61 (0)8 9338 2340

[sales@galvinengineering.com.au](mailto:sales@galvinengineering.com.au)

[www.galvinengineering.com.au](http://www.galvinengineering.com.au)

ABN: 78 008 719 382

PERTH | SYDNEY | MELBOURNE | BRISBANE | ADELAIDE

